

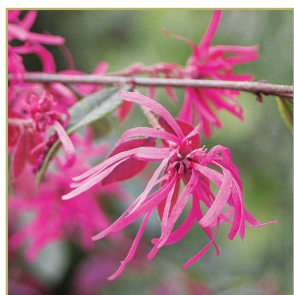


NEWS & UPDATES FOR MEMBERS - SUMMER 2019

Penjing Exhibition & Summer Events

Lan Su celebrates Summer with a series of events including Embracing Culture: Lan Su Celebrates Asian Heritage Month, Silk Road Exhibition, Penjing Exhibition, Summer Concert Series & more ... *see more inside*

Curator of Horticulture Corner	page 2
Jazz in the Garden Summer Music Series	page 5
Taste of Asia: Evening Food Event	page 6
Summer Member Evenings	page 7



BOARD of DIRECTORS

OFFICERS

Terry Smith, *President*
Raymond Cheng AIA, *Vice-President*
Jill Chen, *Treasurer*
Betty Jean Lee, *Secretary*

DIRECTORS

Connie Hiram
Rosaline Hui
Don Jackson
Ted Johnson
Bernie Kerosky
Stephen Ledoux
Greg Martin
Hong Mautz
Jerry Rosette
John Spencer Stewart
Wendy Tanada
Kathy Van
Scott Wells
Helen Ying

Stephen Ledoux, *legal counsel*
Davis Wright Tremaine

LAN SU STAFF

LEADERSHIP

Lisa James, *Executive Director*
Lynne Barrett
Justin Blackwell
Katie Hill
Van Machado
Rebecca Mackey
Lisa Santo
Scott Steele
Kathie Titzler
Gary Wilson

STAFF

Mandi Atkinson
Clayton Beach
Eugenia Chow
Zoë Clark
Milena Dadaj
Nick Garza
Calvin Hamann
Nicci Kaufmann
Brandon Lenzi
Carla Lilyquist
Maggie Lim
Marina Ma
Adam Mathews
Carly Ng
Kevin O'Neil
Stacey O'Rourke-Powell
Stephen Smith
John Stevenson
Venus Sun
Anna Truxes
Craig Walker

RENOVATION OF THE PHOENIX REST COURTYARD

Curator of Horticulture Corner with Justin Blackwell



*Justin Blackwell,
Curator of Horticulture*

As many gardeners know, there is a cycle of growth and decline. Excitement of something new sometimes offsets the sadness of losing a cherished plant.

Lan Su has lost a few cherished plants over the years, including the Phoenix tree in the Phoenix Rest Courtyard. The name of this courtyard was given in honor of the tree planted here as part of the original design of the garden.

According to Chinese legend, the Phoenix tree (*Firmiana simplex*) — also known as a Chinese Parasol tree — is the preferred perch of the Phoenix. Its cardinal virtues are benevolence and sincerity among others. It also symbolizes the sun, light and warmth — all of which are conditions that a Phoenix Tree enjoys.

As many will remember, the Phoenix Tree succumbed to a blight known as *Phytophthora* in 2013. This blight resides in the soil naturally, but can be activated by poor drainage in the soil and from a disease that attacks the roots of the plant, prohibiting nutrient and water absorption. Other plants also fell victim to *Phytophthora* including rhododendrons and flowering quince which have been removed. The *Camellia japonica* 'Grandiflora Rosea' holds on both through surviving the blight, but and being partially crushed by a tree that fell in a winter storm several years ago.



We are now planning a renovation of this courtyard with donations from generous and caring donors like you. Due to research and a better understanding of how this blight works, we can renovate this courtyard bringing it back to its former glory. The search for a replacement *Firmiana simplex* is easier said than done however. This unusual — if not rare — tree takes our search nationwide to find a suitable specimen for the site. Other specimen plants needed, in addition to a Phoenix tree, include *Osmanthus burkwoodii*, an osmanthus species new to the garden, and *Sasa hyatae* — a low growing bamboo grass.

Several other companion plants will be added to give the visitor a sense of a mature garden bed. However, before we replant, we will resolve the soil issues that are responsible for the decline of this courtyard. Soil renovation and discovering the condition of drainage in the courtyard is key to the success of the new plantings.

We thank you for your part in the continuing story of the garden's cycle of rebirth and renewal. To help, make a gift to support the project at

WWW.LANSUGARDEN.ORG/PHOENIXREST

SCHOLAR SOCIETY MEMBER RECEPTION



As a thank you for their generous donations, all Scholar Society members (\$1,000+) are invited to join us for an exclusive reception in the garden on July 25, from 7-9 p.m. for cocktails, hors d'oeuvres and live music. Learn more about Scholar Society benefits at WWW.LANSUGARDEN.ORG/SCHOLARSOCIETY. RSVP to Lisa Santo, Development Manager, at 503.542.2921 or lisas@lansugarden.org.

EMBRACING CULTURE: LAN SU CELEBRATES ASIAN AMERICAN & PACIFIC ISLANDER HERITAGE MONTH

This May, Lan Su celebrates the cultures of Cambodia, Indonesia, Japan, India, Philippines, Thailand, China, and the Pacific Islands



The Cambodian Dance Troupe of Oregon

Celebrate National Asian American & Pacific Islander Heritage Month this May with exciting cultural performances and activities at Lan Su Chinese Garden.

Each Saturday and Sunday in May, Lan Su hosts cultural performances from local cultural organizations and dance troupes. Performers include groups representing the cultures of Cambodia, Indonesia, Japan, India, Philippines, Thailand, China, and the Pacific Islands.

MULTICULTURAL FAMILY DAY

The month kicks off with a series of events on Saturday, May 4 with a special Multicultural Family Day. Learn about different traditions and cultures from participating program partners, listen to a talk on Japanese poetry and participate in story time and family craft activities. Visit Lan Su's website for a full schedule of Multicultural Day events, visit WWW.LANSUGARDEN.ORG/MULTICULTURALDAY

SCHEDULE OF PERFORMANCES

SATURDAY, MAY 4 — Multicultural Family Day

- 1 p.m. — Ka Lei Hali'a O Ka Lokelani (Pacific Islands)
- 3 p.m. — UNIT SOUZOU (Japan)

SUNDAY, MAY 5

- 1 p.m. — Chinese Friendship Association of Portland (China)
- 3 p.m. — Indonesian Performing Arts of Oregon (Indonesia)

SATURDAY, MAY 11

- 1 p.m. — Filipino American Friendship Club of Oregon (Philippines)
- 3 p.m. — One with Heart (Indonesia)

SUNDAY, MAY 12 — Mother's Day

- 1 p.m. — Paradise of Samoa (Pacific Islands)
- 3 p.m. — Vancouver Jasmine Dance Troupe (China)

SATURDAY, MAY 18

- 1 p.m. — Thai Organization of Oregon (Thailand)
- 3 p.m. — Kalabharathi School of Dance (India)

SUNDAY, MAY 19

- 1 p.m. — Teva Oriata (Tahiti)
- 3 p.m. — Eternal Arts Kungfu (China)

SATURDAY, MAY 25

- 1 p.m. — Takohachi (Japan)
- 3 p.m. — Cambodian Dance Troupe of Oregon (Cambodia)

SUNDAY, MAY 26

- 1 p.m. — Team Japonesque (Japan)
- 3 p.m. — NW Chinese Dance Troupe (China)

THE ART OF FACIAL MAKEUP IN CHINESE OPERA

Sunday, May 5 — 11 a.m.-1 p.m.

Facial makeup, a special art in Chinese operas, requires a distinctive technique of painting. Bold designs and colors are painted on each performer's face to symbolize a character's personality, role, and fate.

Join Paul Ip, Lucy Ip and Lisa Chow as they demonstrate and walk visitors through step-by-step the art of facial makeup in Chinese opera. Learn more about this event at

WWW.LANSUGARDEN.ORG/CHINESEOPERAMAKEUP



PENJING: BALANCE BETWEEN BEAUTY AND NATURE

June 15-26



PENJING WORKSHOP

June 15, 9-11 a.m.

A hands on workshop with Robert Cho of Asia Pacific Gardening will be offered on June 15 to learn more about these magnificent plants and how to create and care for them.

REGISTRATION COST Workshop tickets on sale May 1
\$35 — members Class limited to 12 participants
\$45 — non-members

Penjing plant and dish available for optional purchase with a \$30 materials fee.

Purchase your tickets to this workshop at
WWW.LANSUGARDEN.ORG/PENJING.

Join Lan Su's horticulture team as they celebrate the art of *penjing* or "traditional tray landscapes" with a display from June 15-26, 2019. Robert Cho, *penjing* and *bonsai* instructor and owner of Asia Pacific Gardening in Kent Washington, will also offer a special workshop to create your own piece.

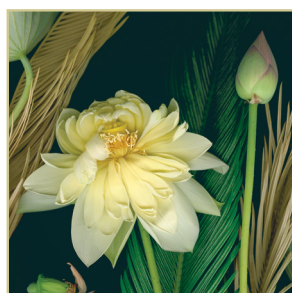
Penjing is the ancient living art of depicting artistically formed trees, other plants, and landscapes in miniature. Originating in China, *penjing* literally means "tray scenery." Artistic interpretations of carefully pruned trees in composition with stones convey personal expression and emotions. Plants, soil and stone depict a complete picture of a landscape or a landscape with water.

Penjing was brought to Japan during the Southern Song Dynasty (1127-1279) where it became known as *bonsai*, depicting a landscape to mimic the shape and scale of full sized trees. *Penjing* are inspired by paintings and poetry, capturing the essence of the spirit of a natural landscape that conveys the abstract such as affections, wishes and ideals.

The display is presented in partnership with Robert Cho and Asia Pacific Gardening This is a unique opportunity to purchase beautiful works of *Penjing* ranging from newer to older specimens!

Learn more at WWW.LANSUGARDEN.ORG/PENJING

UPCOMING ART ON DISPLAY



JUNE & JULY

Deb Stoner
Photography



JUNE & JULY

Wayne Jiang
Painting



AUGUST & SEPTEMBER

Gail Owen
Lino, Hand-Stitched Prints



AUGUST & SEPTEMBER

Katie Preston
Painting & Illustrations

Learn more about all art on display and related programming in the garden at WWW.LANSUGARDEN.ORG/ART

JAZZ IN THE GARDEN SUMMER CONCERTS



蘭蘇園

Presented by

PDX JAZZ



Lan Su Chinese Garden and PDX Jazz present Jazz in the Garden, a summer music series held in the early evening splendor of Portland's most intimate venue. Featuring six concerts Tuesday evenings July 16 through August 20, the series includes local, national and international artists.

SERIES PASSES *

- \$215 — Member
- \$240 — General
- \$160 — Student

* Note: Series pass ticket holders get early entry at 6:30 p.m.

SERIES PASS MEALS ADD ON

- \$120 — Meat
- \$120 — Vegetarian

INDIVIDUAL TICKETS

- \$40 — Member
- \$45 — General
- \$30 — Student

INDIVIDUAL DINNERS PER CONCERT

- \$22-24 — Meat
- \$22-24 — Vegetarian

\$22 pre-purchase, \$24 night of concert

Visit WWW.LANSUGARDEN.ORG/JAZZ for more details

TUESDAY, JULY 16

BKO QUINTET

BKO Quintet's music is born from a meeting between five established artists. This gathering provides a journey into the heart of the contemporary Mali.



TUESDAY, JULY 23

MIKE HORSFALL & TJADERADE

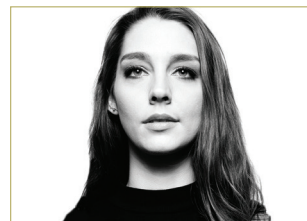
Mike Horsfall is in demand as a composer, arranger, recording artist, concert soloist and educator on both vibraphone and piano.



TUESDAY, JULY 30

HAILEY NISWANGER PRESENTS MAE.SUN

Saxophonist, composer and vocalist Hailey Niswanger presents the debut album from her newest and most innovative configuration yet: MAE.SUN showcasing her eclectic sonic palette ranging from contemporary jazz to soulful funk and neo-soul.



TUESDAY, AUGUST 6

CHINA MOSES

Moses is the rare young, female artist—capable of swinging with the finest and drawing on her innate mastery of tempo. Her R&B heritage allows her to carry emotions across a lyric and infuse profundity in every note.



TUESDAY, AUGUST 13

CONNIE HAN

The New York Times describes Han as “the rare musician with fearsome technical chops, a breadth of historical knowledge and enough originality to write tunes that absorb your ear easily.”



TUESDAY, AUGUST 20

BOBBY TORRES ENSEMBLE: REMEMBERING WOODSTOCK, WITH A LITTLE HELP FROM MY FRIENDS

Bobby Torres Ensemble presents a look back at Woodstock and the iconic music played that weekend. Bobby performed with Joe Cocker and The Grease Band at Woodstock—the largest three-day festival to date.



SPONSORED BY



CLASSIC PIANOS
A PASSION FOR PIANOS



STERLING
VINEYARDS



CUISINES OF ASIA

June

Lan Su celebrates *Cuisines of Asia* with a month of programs and events. Every Tuesday & Thursday in June at 2:30 p.m., local Asian restaurants will talk about their cuisines, including personal stories and recipes from their restaurant.

PARTICIPATING RESTAURANTS

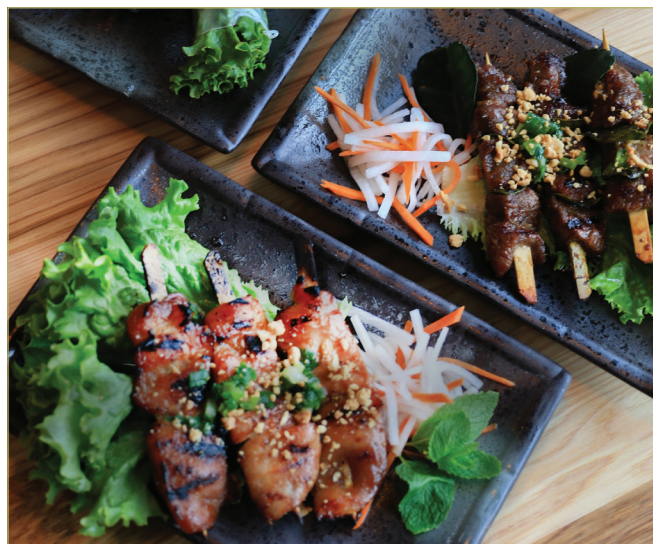
HK Café (China) • Mirakutei (Japan) • Kopi (Indonesia) • The Boiling Bowl (Vietnam) • *and more to come!*

For a complete list of *Cuisines of Asia* events and participating restaurants, visit WWW.LANSUGARDEN.ORG/CUISINES



TASTE OF ASIA

Thursday, June 6 — 7-9 p.m.



Doors open at 6:45 p.m. Will Call opens at 6 p.m. Please note that on event evenings, Lan Su Chinese Garden will close early at 6 p.m. A no-host bar with wine, beer, soda and mineral water will be available. Event will go on as scheduled rain, shine or heat. No refunds or exchanges.

In conjunction with Lan Su Chinese Garden's *Cuisines of Asia* month in June, enjoy an after-hours ticketed event in the garden sampling food from China, Hong Kong, the Philippines, Vietnam, Japan and more.

The evening also includes music from the Nanfang Chinese Music Club, the Chopstick Challenge activity and a traditional Lion Dance from Lee's Association Dragon & Lion Dance Team.

PARTICIPATING RESTAURANTS

Bao Bao (Chinese) • Chin's Kitchen (Chinese) • Danwei Canting (Chinese) • Great Tang (Chinese) • Hem 23 (Vietnamese) • Ichiza Kitchen (Vegan Pan-Asian) • Oyatsupan Bakers (Japanese Pastries) • Puffle Waffle (Hong Kong Style) • Shandong Restaurant (Chinese) • Tambayan Restaurant (Filipino) • The Tao of Tea (Teas of Asia)

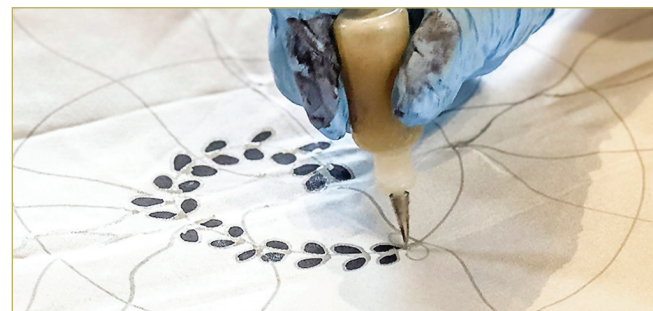
TICKETS

- \$35 — Member
- \$45 — General
- \$25 — Student

Learn more and purchase your tickets at WWW.LANSUGARDEN.ORG/TASTEOFASIA

TRAVELS ON THE SILK ROAD

July & August



Silk Painting with partner Cygnet Silks

Join us on a journey along the ancient trade route during Lan Su's celebration of *Travels on the Silk Road*. Events in July & August include talks about nomadic life along the trade routes, watch a demonstration of silk painting, and revel in the return of the popular live silk worms.

The silkworm display will be up the entire event to view their progress. Watch as they spin their cocoons and emerge as silk moths. There's always something to see and do!

Learn more about *The Silk Road* in July & August at WWW.LANSUGARDEN.ORG/SILKROAD

SUPPORTED BY THE
THE COLLINS
FOUNDATION

SUMMER CULTURAL PERFORMANCES

PORTLAND CHINESE DANCE TROUPE

Saturday, June 1 | 3 p.m.

Established in 2002, the Portland Chinese Dance Troupe has provided summer dance workshops every year lead by Artistic Director Julie Ding. Dedicated to performing authentic Chinese cultural dances, the troupe is a crowd favorite at Lan Su with multiple performances in the garden earning rave reviews.

LION DANCE ON JONGS

Saturday, July 20 | 3 p.m.



Lion dances are a form of traditional dance in Chinese culture and other Asian countries in which performers mimic a lion's movements in a lion costume to

bring good luck and fortune. The lion dance is usually performed during the Chinese New Year and other Chinese

traditional, cultural and religious festivals. Join Lan Su for an exciting lion dance performance as Viet Hung Lion & Dragon Dance Team will be performing the lion dance on jongs (high poles).

CANTONESE OPERA

Saturday, August 17 | 7:30 p.m.

Note: Lan Su extends its regular hours until 9 p.m. to allow for this performance to occur with regular admission or membership



Traditional Chinese opera is a popular form of drama and musical theatre in China with roots going back to the early periods in China. Early forms of Chinese

theater were simple, but over time they incorporated various art forms, such as music, song and dance, martial arts, acrobatics, as well as literary art forms to become traditional Chinese opera. This show is an experience not to be missed.

SUMMER MEMBER EVENINGS

The last Wednesdays of June, July, August and September from 7-9 p.m.



JUNE 26 — MEMBER APPRECIATION EVENING

Our first summer member appreciation evening of the season features a *penjing* display and discussion along with traditional Chinese music and food.

JULY 24 — MEMBER APPRECIATION EVENING

Join us for guided tai-chi by Flying Tortoise Academy, live music and a tacos and tequila tasting by Little Taco & Tequila.

AUGUST 28 — MEMBER APPRECIATION EVENING

A lively, Cuban-inspired evening with Cuban music from Xavier Tavera that makes you want to move. Enjoy Cuban bites and a special architecture presentation by Lynne Barrett, Director of Facilities at Lan Su.

SEPTEMBER 25 — MEMBER APPRECIATION EVENING

Relaxing in the garden with soothing music and light food is the perfect way to say goodbye to summer. Don't miss a presentation on koi by Lan Su's Facilities Assistant, Calvin Hamann at this last Summer Member Evening!

Stay tuned for updates on our next Member Night Out in November. Learn more about Lan Su's Summer Member Appreciation Evenings at

WWW.LANSUGARDEN.ORG/MEMBERBENEFITS

VOLUNTEERING AT LAN SU

Make new friends, learn new things and make cross cultural connections all while supporting Lan Su with your time and energies



Since the opening of Lan Su Chinese Garden in September 2000, volunteers have played an integral part in the success of the garden by welcoming visitors, leading tours, assisting with programs and events, promoting membership, cleaning, maintaining the facilities and helping the horticulturists.

Today Lan Su has 111 active volunteers donating their time, energy, expertise and friendship to Lan Su. Volunteers represent all ages, nationalities, and walks of life. Each of them brings their unique skills and each has a shared passion for the garden. Members often make some of the best volunteers because they know first-hand the beauty, tranquility and cultural traditions of this very special treasure.

Currently, Lan Su is recruiting for hosts, facilities and horticulture maintenance, membership promotion and shop assistance. Make friends, learn new things, help make cross-cultural connections and contribute to our success by volunteering at Lan Su.



To volunteer, visit WWW.LANSUGARDEN.ORG/VOLUNTEER or contact Katie Hill, Director of Volunteers & Education at 503.542.2095 or katie@lansugarden.org. We look forward to hearing from you!

A heartfelt thank you goes to each volunteer from the staff and Lan Su Board of Directors!

CHINA THEN AND NOW: ANTIQUE FURNITURE & ART SALE

An Expression of Culture & Color through Chinese Antique Furniture and Modern Art — July

Lan Su Chinese Garden and Asia America are partnering in July to showcase a series of antiques as well as artwork from artist Ningshu Fang.

Traditionally thought of as dark and heavy with a great deal of ornate carving, the Chinese furniture in this partner display is more vibrant in color and are hand painted pieces that you would find in the countryside homes of rural China around 100 years ago.

These pieces will pair well with the artwork of artist Ningshu Fang whose work is a modern approach to pastoral scenes in rural China expressed in vivid color. All items on display are available for purchase through the Garden Shop.

Learn more about partner Asia America at WWW.ASIAMERICAFAURNITURE.COM.



PHOTO COURTESY ASIA AMERICA

SCHOLAR SOCIETY CIRCLE

Donations made from April 2018 - March 2019.

BRUSH PAINTING 畫

\$50,000-99,999

Firstenberg Foundation
Prosper Portland

CALLIGRAPHY 書

\$25,000-49,999

Davis Wright Tremaine
James F. & Marion L. Miller
Foundation

WEI CHI 棋

\$20,000-24,999

Metro

ZITHER 琴

\$15,000-19,999

The Collins Foundation
MEDIAmerica

LOTUS 蓮

\$10,000-14,999

Michael Babbit & Ellen
Bartholomew
Kristin Jordan

OSMANTHUS 桂

\$7,500-9,999

The Bensimon Center
Susan A. Harbison
NW Natural
Royal Comfort LLC
Reed & Christina Wilson

PEONY 牡丹

\$5,000-7,499

Airbnb
Raymond Cheng
First Interstate Bank

Florists' Review
Herbert A. Templeton Foundation
David Joslin & May Lim
Juan Young Trust/Western Division
Millicent Naito
Stewart Sokol & Larkin LLC
U.S. Bank Foundation
Scott & Jason Wells

MAGNOLIA 玉蘭

\$2,500-4,999

Ray & Jean Auel
Davis Wright Tremaine, LLP
Frank Adams Wholesale Florist
Dennis & Margaret Fritz
Halton Foundation
Shelda R. Holmes
Jane R. Kendall Family Fund of the
Oregon Community Foundation
Julie & David Machado
Hester Nau
Neighbors West-Northwest
NWEA
Chanel O'Neill & Trish Ramos
The Oregon Community Foundation
Portland Wholesale Flower Market
Arlene Schnitzer
The Samuel L. Johnson Foundation
VT Group
Work & Co.

CHRYSANTHEMUM 金菊

\$1,000-2,499

Anonymous (2)
Joann Albrecht
Donald Andersen
Ascendant Beer Company
Asia America Antiques
Susan Blount McNiel
Jim & Julie Bosket
Roberta R. Branson

Linden & Christine Chin
Cathy & Edwin Chinn
Truman W. Collins, Jr.
Karen & Bill Early
Sandra Etlinger
Everett Street Autoworks
First Interstate Bancsystem
Foundation, Inc.
Floral Design Institute
Doyle Forister & Gary Sheldon
Gary & Treva Forister
Google
Marty & Bill Hall
Greg & Betsy Hatton
Marshall Hieronimus
Katie Hill & Doug Kagel
Rebecca Hill & Bret Spriggs
Bruce & Margo Howell
Jackie Chan Fan Club USA
Lisa James
Ted Johnson
Charlene Jones
David & Linda Kagel
Phil Kalberer
Diane & Gregg Kantor
Susan & Greg Kay
Peter J. Kendall
Jane A. Kennedy
Michael & Barbara King
Cathy Koppang Warhank
Alison Kwok
Walter E. Lander & Kit Tong Ng
Stephen Ledoux
Betty Jean Lee & Leiann Bonnet
Maihwa F. Li
Robert & Gretel Lindbloom
Greg Martin
Michael & Christopher Mele-Wagner
Bill Metz
moovel
Allison Dumble Mudrick

Mia Nicholson & Tim McMahan
NurseGrid
OH Planning+Design, Architecture
Carlton & Roberta Olson
One Pacific Square
Kyle Ostergard
Dorothy Piacentini
David J. Pollock
Project^
Stan & Kim Prosser
Franklin & Sharry Quan
Gretchen S. Quigg
William & Anne Rasnake
Elizabeth Rathbun & Alan Peck
Sharlyn Rayment
Lynne Diane Roe, M.D.
& Allison Eshel
Charlene Rogers
Rose E. Tucker Charitable Trust
Jerry Rosette
Laura L. Schlafly Charitable Fund
Henry F. Schwarz, III
& Susan L. Rinker
Michael Scogna & Jill Chen
Daniel & Ken Skach-Mills
Terry & SaTina Smith
Thomas & Marie Spence
Starbucks
Sherrie Steele James
Cheryl & Rena Tonkin
Nancy Vartanian
Bart & Karin Whalen
Stephen & Helen Ying

**SCHOLAR
SOCIETY**
at Lan Su Chinese Garden



SPRING CLEANING IN THE GARDEN SHOP

Visit the shop and see all of the great merchandise in a new layout!

Stop by the Lan Su Garden Shop to see the new store arrangement — making it easier for you to browse and find that perfect item to take home. Now with more space, the Garden Shop team is proud to offer a greater variety of gifts to remember your visit by.

With a new layout, the Garden Shop features items on sale, including:

- **MAY** — 20% off Outdoor Garden Décor
- **JUNE** — 20% off Kitchenware (chopsticks, bowls, etc.) connected to Cuisines of Asia (see page 6)
- **JULY** — Garden Shop Sidewalk Sale - Saturday, July 13 — one day only, receive up to 75% off overstock and discontinued items
- **AUGUST** — 20% off silk related items connected to Travels on the Silk Road event (see page 6)

Learn more about Lan Su's Garden Shop at

WWW.LANSUGARDEN.ORG/GARDENSHOP



IN-KIND DONATIONS *Items and services donated from April 2018 - March 2019*

23Hoyt
A Cena
Alma Chocolate
Altabira City Tavern
Annuncio Agency
Arciform
Artists Repertory Theatre
Ascendant Beer Company
Boyerism Burlesque
Bridge City Parking LLC
Broadway Rose Theatre Company
Catman Cellars
Clarklewis
Communications Northwest
David Cooke
Davis Wright Tremaine, LLP
Coopers Hall
Creo Chocolate
Curate Home
Lea Anne Doolittle & Ted Smart
Echo Natural Beauty
Everett Street Autoworks
Martina Fetter
Floral Design Institute

Brittany Flores
Dell Ford
Fully Inc
Greenleaf Wholesale
Elizabeth Hathaway
HFT International and NW Orchids, LLC
HK Cafe
Hoffman Construction Company
Hoyt Arboretum Friends
Huber's
Lisa James
Jeff Day Photography
Jingzi Photography
Kasbah Moroccan Cafe, LLC
Le Pigeon
LeChon
Leeka Architecture and Planning
Lee's Association Lion Dance Team
Yahua Li
Ian Lindsay Live
Little Bird
Dan & Debra Lucas
Mad Reckless

Mario's
Molly McGuire
Mi Mero Mole
Linda Montgomery
Anne Naito-Campbell
Nel Centro
New Deal Distillery
Mia Nicholson & Tim McMahan
NW Natural
Old Town Florist
OMSI
Oregon Camellia Society
Oregon Nikkei Endowment
Palate Pleaser by Carol Lynn, Inc.
The Party Place
Pearl Hardware
Lucinda Pierpont
Pomarius Nursery
Portland Japanese Garden
Portland Nursery
Portland Spirit River Cruises
Profile Theatre
Q Restaurant & Bar
Rainyday Flowers

Raven & Rose
Charlene Rogers
Cheryl Rogers
Royal Comfort LLC
Cara Rozell & Roger Kornfein
Sabina's Style
Lisa Santo
Maria Schmied & Christine Castro
Henry F. Schwarz, III & Susan L. Rinker
Starbucks
Sterling Vineyards
Martha & John Stewart
Szechuan Brothers
Ruthe Taber & Susan Mortimer
Tanner Creek Tavern
The Tao of Tea
Three Doors Down
Anna Truxes
Vega Dance Lab
Wilfs Restaurant & Bar
Xocolatl de David

ORCHID LEGACY SOCIETY



Orchid Legacy Society Members have named Lan Su as a beneficiary of a planned gift:

Cathy Chinn	Dan & Ken Skach-Mills
Laura Schaflly	Raynette Yoshida & Ted Takamura
Betty Jean Lee	Michele & Matt Wier
Gordon Olson	

We are grateful to the following for estate or bequest gifts made to Lan Su:

Gail Meade Devon O'Brien Jerry G. Jones Trust

The following have left Lan Su Chinese Garden in their will or made gifts via their estate. If you have Lan Su in your will or trust and would like to be recognized, please contact Lisa Santo, Development Manager at lisas@lansugarden.org or 503.542.2921.

GIFTS IN HONOR OR IN MEMORY

(APRIL 2018 – MARCH 2019)

GIFTS IN HONOR

In honor of Trevor & Brittany — by Bruce & Margo Howell
In honor of Raymond Cheng — by Susan Nunnery
In honor of Frances Chin — by Linden & Christine Chin
In honor of Lin Tai & Kam Lum Chung — by Erma Hoffman
In honor of Meghan Anne Doughty — by Muriel Wah
In honor of Marilyn Gryte — by Terry Taylor & Marilyn Gryte
In honor of Zach & Rachael Hays — by Phil & Sandra Hays
In honor of Lisa James — by Sue Horn-Caskey & Rick Caskey
In honor of Donald Jenkins — by Carol and Jan Vreeland
In honor of Joann & David Horsley Le — by Gloria Lee
In honor of Betty Jean Lee — by Leiann Bonnet
In honor of Rebecca Mackey — by Jennifer Mackey
In honor of Vivian & Herman Medak — by Ruth Medak
In honor of Alix Nathan — by Anne Denecke
In honor of Li Po for A Banish Me — by Gordon Olson
In honor of Peter S. & Future Young Adult Members — by Elisabeth Minthorn
In honor of Lisa Santo — by David Pollock
In honor of Daniel Skach-Mills — by Gordon Olson
In honor of Melanie & Kevin Yamada — by Betty Jean Lee
In honor of Raynette Yoshida — by Anne Bisio

GIFTS IN MEMORY

In memory of Dave Barrett — by Alan & Gwen Shusterman

In memory of Mary Bishop — by Amy Grile; and Jeanne Staehli
In memory of Ernie Bloch — by Betty Jean Lee & Leiann Bonnet
In memory of Frederic Butzon — by Regan Urbanick
In memory of Ba-Shing & Lilly Chen — by Timothy Chen
In memory of Tang Hua Chen — by Yvonne Chen
In memory of Mr. Willie Chan Chi-Keung — by Jackie Chan Fan Club USA
In memory of Yuen Chow — by Eugenia & Kwai Chow
In memory of Wanda Dishman — by Cathy and Edwin Chinn
In memory of Alan & Sam Foey — by William S. and Carole M. Covlin
In memory of Susan Fritz — by Dennis and Margaret Fritz
In memory of Gary Harbinson — by Susan Harbison
In memory of Linda Hulbert — by Donna Keller
In memory of Vera Katz — by Jane Hardey Cease
In memory of Henry W. Lee — by Cathy and Edwin Chinn
In memory of Hilda Lenske — by Moshe Lenske
In memory of Dorothy Lynam — by David Lynam & Patrick Gracewood
In memory of Philip Tang — by Alice and Miguel Chang
In memory of Frances Tong — by Mary J. Hessel
In memory of Marcia E. Weinstein, Ph. D. — by Janet Goetze Sanderson; and Molly Weinstein
In memory of John L. Westphal — by Colleen Westphal
In memory of Helen Elizabeth Wilson — by Reed & Christina Wilson
In memory of Dr. Peter Wong — by Muriel Wah
In memory of Roland Wong — by Betty Jean Lee
In memory of Fong Yee — by June Lee

GIFTS TO DATE

Donations and memberships made from April 2018 - March 2019.

PINE 松

\$750-999

Carole F. Alexander & Bonnie Meltzer
Jeffrey Feiffer & John Briggs
Adam & Betty Kobos
Oscar & Mary Mayer
Carol & Phil McCoog
Jackson Reed & Brenda Russell
Jan & Carol Vreeland
Mary Lee Wong
Raynette K. Yoshida & Ted J. Takamura
Kim Ziebell

BAMBOO 竹

\$500-749

Debra Bellos
Peggy Biskar
James Bluhm
Jeff G. Condit
Linda J. Crum & Ross W. Peterson
Ron Dieu & Robert Shepherd
Elk Cove Vineyard
Gevurtz Menashe Larson & Howe P.C.
Donald & Stephen Hammond
Connie Hiram & Henry Bruns
Mary Hurst
Dr. W. Sheldon Hurst & Karen Hurst
Innovative Housing, Inc.
Apricot & David Irving
Janet & John Jay
Donna & Paul Kerley
Martha Koerner & Bill Dieter
Koerner/Dieter Family Foundation
Donna Louie
Kathy MacNaughton
Helle Nathan
Tom & Chris Neilsen
Suzanne & Ronald Niven
Oregon College of Oriental Medicine
Mary Christine Perry & Charlotte Perry
Portland Chinese Times

Janice E. Quivey
Michael D. Reed & Carol Mayer-Reed
Patricia O. Schleuning
SERA Architects
Steven Smith & Dennis Johnson
Sue & Drew Snyder
Kathie Titzler & Luis Morris
Rena Leah Tonkin
Richard L. Varco, Jr. & Tara M. Varco
Richard & Linda Ward
Priscilla Bernard Wieden
Bing Wong
Bill Wyatt & Merri Souther Wyatt
Jonathan & Pearl Yu

PLUM BLOSSOM 梅

\$250-499

M. Addy
Loren A. Anderson
Apple Inc.
James W. Asaph, MD & Mary Ann Asaph
David & Jennifer Austin
Nancy Baker & Ken Rhodes
Robert & Leslie Beers
Susan & Peter Belluschi
Dr. & Mrs. William Bennett & Sandra S. Bennett
Dean & Mary Boyer
John & Sarah Brehmer
Claude Burgoyne & Vicki Smith
Irene & Pat Burk
Martha M. Butler
Kimberly & Jim Carson
Steve & Christine Chapman
Ann C. Chilcote
Fred & Susan Chilton
William & Heather Clydesdale
Costco - United Way — managed by TRUiST
Mike & Lisa De Luca
Dennis Deming & Corky Cortright
Marguerite H. Drake
Stephen Early & Mary Shepard, M.D.
Elaine Elsea
David Enders
Debbie & Bob Fellman
Robin Gates
Robert & Janette Gill
Melissa & Robert Good
Steve Goodrich
Joan Hamilton & David Gray
Sunny & Judy Han
Susan & Richard Helzer
Mary Hirsch & Yoshiaki Shimizu
William Holland & Mary Ann Downey
Sherry Holley & Aloysius Joseph Didier
Maurice & Judy Hooff
Lung Hsin Wu & Philip Wu
Eamonn & Kathy Hughes
Tom & Gayle Hughes
Anna & Rod Jackson
Donald Jenkins
Jeff & Lily Joslin
David Judd & Kathryn Fitch
Sherry Kam & Dana Samples
Gerri Karetsky
Austin Ketcham & Michael May
Jeffrey Knapp & Mark Clift
Christine Knodt & Robert S. Knapp
Kathryn Krygier & Howard Barney
Tom & Angela Lancaster
Jack T. Laney & Mary E. Hafner-Laney
Andrew Lau
Sandra Laubenthal
Gloria Lee & Morgan Pace Bolton
Mel Lee
Paul Lipscomb & Lynne Cartwright
Karen & Don Livingstone
Roger & Dana Luedtke
Kim & Jimmie Luey
Mike & Saskia Magner
Julia B. Mark
Becki Marsh & Wink Gross

Sherylita Mason & Chelsea Deloney
Mike & Judy McCuddy
Isabel McDonald
Shelly M. McFarland
Ruth Medak
Gevurtz Menashe
Michael & Susan Mueller
Beverly & Richard North
Ray & Bonnie Olson
Dorothy Plummer
JoAnne & Craig Pabols
Leslie & Wallace Rainey
Richard Rees & John Holloran
Amy R. Richter
Vern Rifer & Linda Czopek
Cara Rozell & Roger Kornfein
Michael A. Russell
Bertha Saiget
Martha Sanford & Gary Hong
Lisa & Brian Santo
June & John Schumann
Aubrey L. Smith, III & Marian E. Smith
Jonathan Smith
Mary Lou Soscia
Lana Gary W. Stachlowski
Christopher Stapleton
Janet Starnes
Olivia Stewart & Clint Buswell
Anna Truxes
Wendy Ware & Dan Gleason
Stuart Weitz & John Gustavsson
Michele & Matt Wier
Peggy Wier
Windhorse Integrative Mental Health
Margaret & Loring Winthrop
Marilyn & John Wong
Rachael Woody & Tobias Inman
Richard & Ellen Wopat
Madoc Yng-Wong & Gregory Randolph

20TH ANNIVERSARY GROUND BREAKING EVENT

Celebrate the 20th Anniversary of Lan Su's ground breaking on Friday, June 7, 2019 from 1-3 p.m.



Volunteers helped paint what the garden layout would be for the original ground breaking.

Come join Lan Su as we celebrate the anniversary of our ground breaking on Friday, June 7 from 1-3 p.m.

This is the first event of our 20th Anniversary Celebration, as we mark special dates culminating with a spectacular gala in September 2020 on our actual anniversary.

Scheduled for twenty years to the day of the original ground breaking, this event will feature a construction photo display,

local dignitaries, garden donors, cake and refreshments for all to enjoy.

No RSVP is necessary, just your presence is requested as you help us celebrate this milestone. Learn more at

WWW.LANSUGARDEN.ORG/GROUNDBREAKING



A mock up in 1999 of what Lan Su's wall and plantings would look like post-opening of the garden

PHOTOS © TERRY TAMBARA PHOTOGRAPHY



LAN SU CHINESE GARDEN

220 Northwest Second Avenue, Suite 1050
Portland, Oregon 97209

NON PROFIT ORG
US POSTAGE

PAID

PORTLAND, OR
PERMIT 5557

To contact Lan Su's membership department, call 503.228.8131 ext 1003 or email members@lansugarden.org.

BE GREEN AND HELP REDUCE MAILING COSTS

Would you prefer to get your newsletter electronically? Let us know and receive future member newsletters in a PDF format to read or download online. Email members@lansugarden.org with your preference and we'll send future newsletters in the way you'd prefer to receive them.

LAN SU CHINESE GARDEN RECOGNIZED AS



Two Year Award Winner



Three Year Award Winner



Five Year Award Winner

REMINDER

As of May 15, Lan Su moves to hours of 10 a.m.-7 p.m. and prices of:

- Adult — \$12.95
- Senior — \$11.95
- Student — \$9.95
- Children 5 & under — Free
- Family — \$37.95

UNDER THE MOONLIGHT TABLES STILL AVAILABLE!



Tables are still available for Lan Su's premier fundraising event, *Under the Moonlight*, on September 7!

Guests will enjoy a lively cocktail hour followed by a brief auction. Following the auction, guests will enjoy an intimate, lantern-lit dining experience in the emerald splendor of the garden prepared exclusively for their private or semi-private table by some of Portland's most exceptional chefs.

Learn more or reserve your table by contacting Lisa Santo, Development Manager, at 503.542.2921 or lisas@lansugarden.org.

UPCOMING EVENTS

Music in the Teahouse	Sun, Mon, Tues, Wed, Fri, Sat
Tai Chi with the Tai Chi Life	Mondays & Thursdays
Plant Walk	Tuesdays
Calligraphy in the Teahouse	Thursdays
Embracing Culture: Lan Su Celebrates Asian American & Pacific Islander Heritage Month	Saturdays & Sundays in May
The Art of Facial Makeup in Chinese Opera	May 5
Cuisines of Asia	June 1-30
Portland Chinese Dance Troupe	June 1
Taste of Asia Evening Event	June 6
Lan Su 20th Anniversary Groundbreaking Evening	June 7
Penjing Workshop	June 15
Penjing Display	June 15-26
Jazz in the Garden Summer Music Series ...	July 16, 23 & 30 and August 6, 13 & 20
Lion Dance on Jongs	July 20
Travels on the Silk Road	July & August
Cantonese Opera	August 17
Summer Member Evenings	Last Wednesdays of June—September

For more information on these & all Lan Su events, visit

WWW.LANSUGARDEN.ORG/EVENTCALENDAR